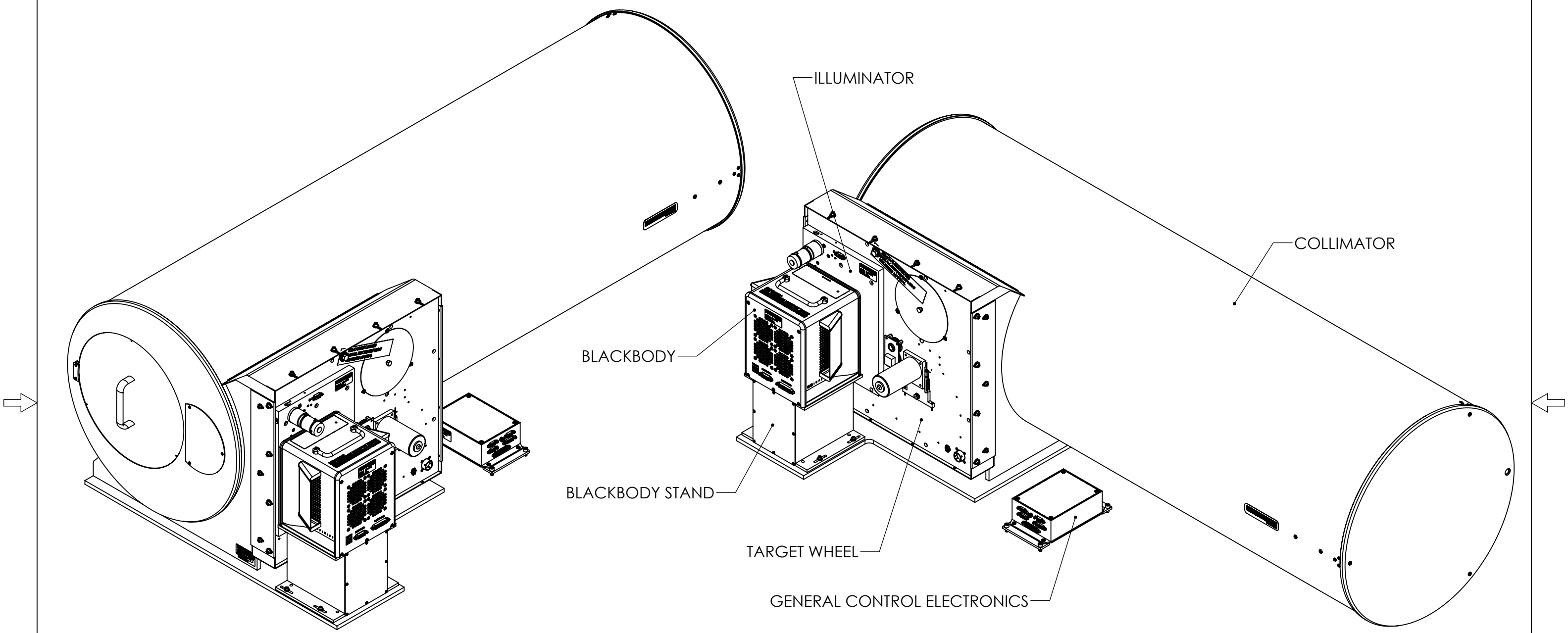


THIS DRAWING CONTAINS PROPRIETARY INFORMATION OF SANTA BARBARA INFRARED INC. (SBIR) AND MAY NOT BE USED FOR THE MANUFACTURE OF ANY PART DISCLOSED HEREIN, NOR DUPLICATED, NOR DISCLOSED TO ANYONE, WITHOUT THE PRIOR WRITTEN PERMISSION OF SBIR.

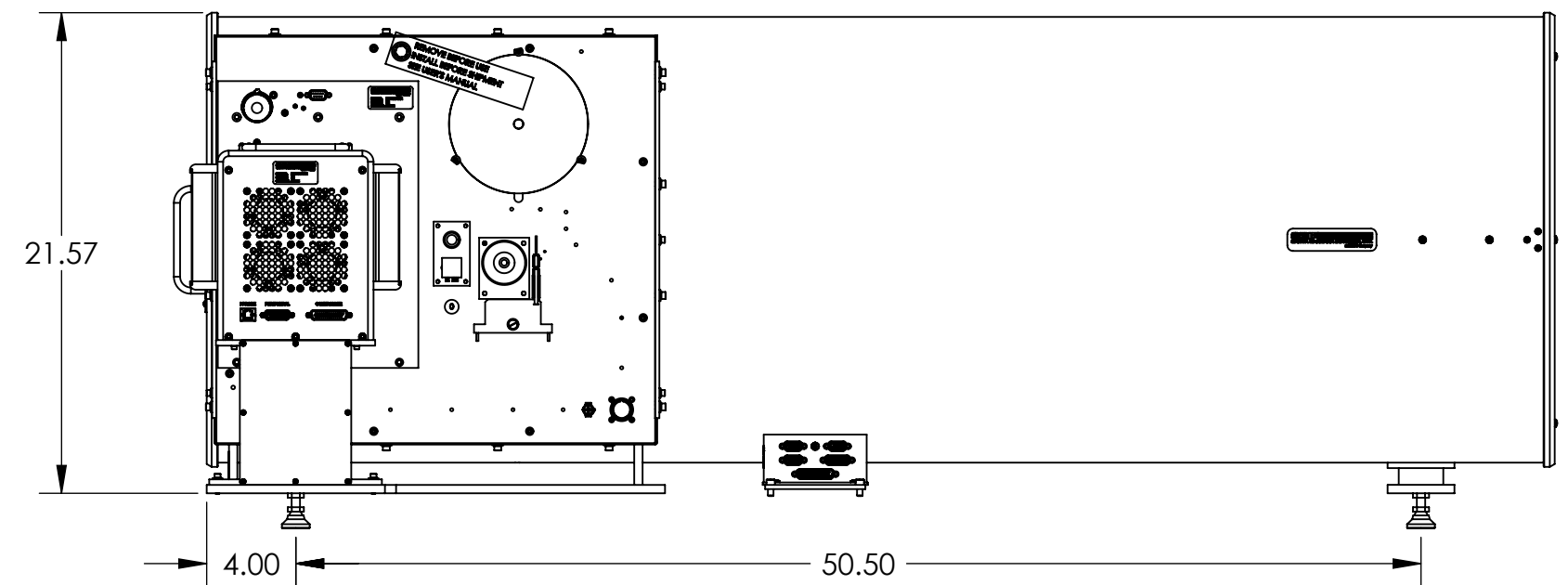
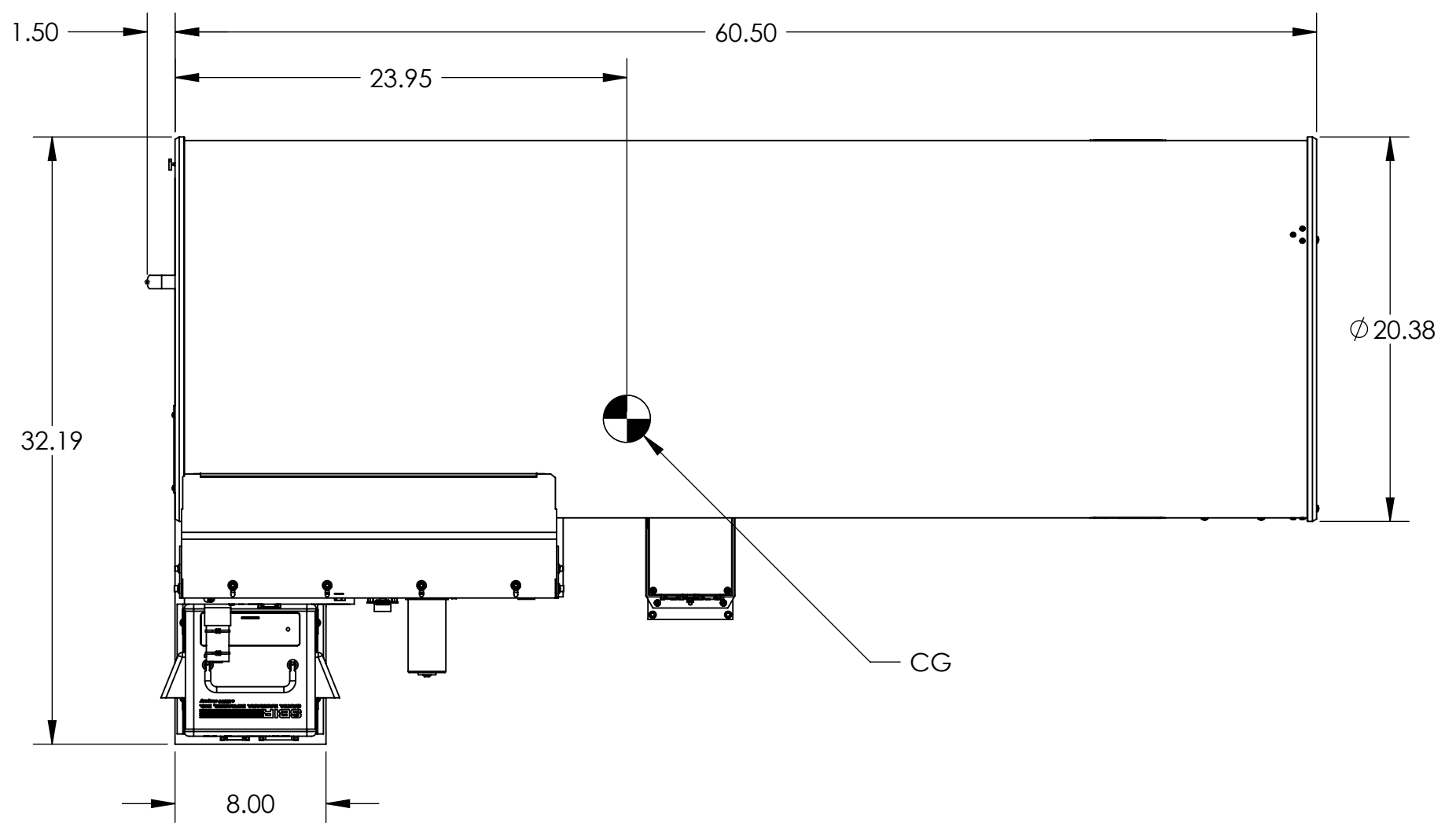
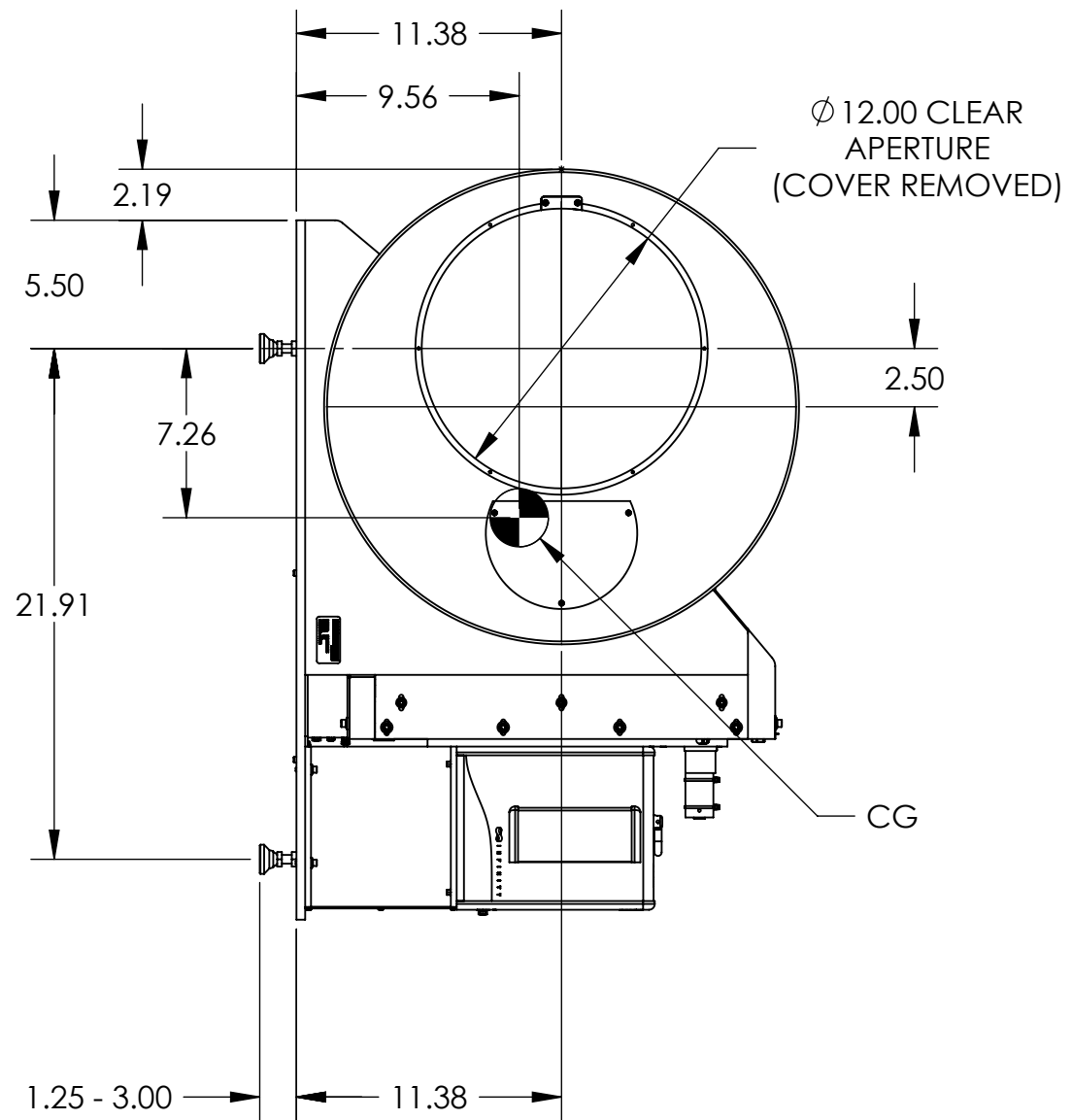
DRAWN	CHECKED	RELEASED	DATE	REVISED PER ECO	REV



- NOTES: UNLESS OTHERWISE SPECIFIED
1. CONTROLLER AND CABLING NOT SHOWN.
 2. ESTIMATED WEIGHT AS SHOWN: 177 LB.

UNLESS OTHERWISE SPECIFIED DIMENSIONS ARE IN INCHES TOLERANCES ARE ± .XX .01 .XXX .005 .XXXX .0005 FRAC. 1/16 ANG. 1/2	DRAWN	D. Monk	DATE	1-06-10	SBIR SANTA BARBARA INFRARED, INC. SANTA BARBARA, CA. 93103 a HEICO company							
	CHECKED		DATE									
	RELEASED		DATE		CAGE CODE: 0B0B2							
	RELEASED PER ECO NO.	048352		TITLE		DOC, OUTLINE, TARGET PROJECTOR, 14008ZI						
DO NOT SCALE FROM DRAWING	SCALE	1:8	SIZE	B	NUMBER	319-000-399	SHEET	1	OF	2	REV	NC

SEE SHEET 1 FOR REVISIONS



TITLE DOC, OUTLINE, TARGET PROJECTOR, 14008ZI				
SCALE 1:8	NUMBER 319-000-399	SHEET 2	OF 2	REV NC